

## WORKSHOP: "ROSE BOUQUETS"



**Summary:** Participants learn to create long stemmed roses using fabric scraps, coloured hot glue and coat hanger wire. They can sew or glue depending on their preference. Flowers can be packaged individually in stiff sheer fabric or together in a long box. Participants can choose from a variety of colours and fabric weights for their flowers and add embellishments to make each one unique. Flowers were made to take home, give away or in this project, donate to a local women's shelter for Valentine's Day.

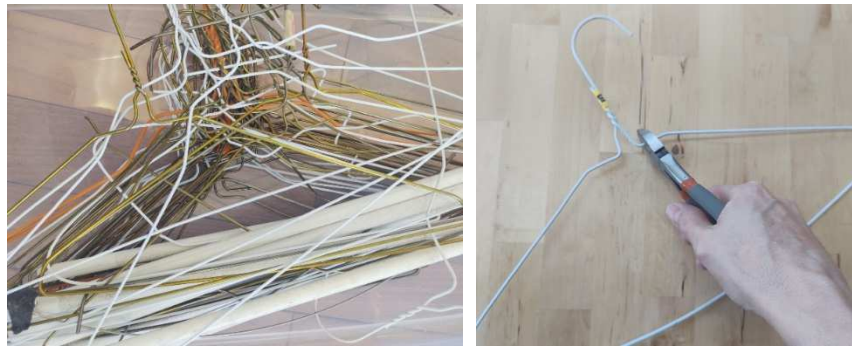
### Materials and Equipment:

fabric – green, red, yellow, white or black  
small sharp sewing scissors  
sewing shears  
measuring tape or measuring tape  
ribbon - red  
popsicle sticks  
coat hanger wire  
tiny clear beads  
water soluble marker  
safety glasses  
flat file  
paper scissors  
plastic container about 7" diameter  
optional: needle and thread  
instructions/ideas sheet

masking tape  
scrap cardboard  
hot glue gun  
hot glue sticks  
heat protective work gloves  
wood skewers  
strong pliers  
wire cutters  
bolt cutters or heavy-duty wire cutters  
hockey tape  
masking tape  
stiff translucent sparkly fabric  
extension cord  
optional: liquid fray preventer  
artwork samples

### Class Plan:

1. Gather old wire coat hangers for making your roses. The white coated ones are easier to cut and bend with regular wire cutters.



- a. The brass-coloured ones are thicker and more brittle and need bolt cutters.



- b. Ones with cardboard covers generally don't have wire through the tube so the wire isn't long enough.
2. Cut one side of the coat hanger hook off using bolt cutters or heavy-duty pliers. We strongly recommend wearing safety glasses and work gloves while cutting and working with wire. Cut ends are extremely sharp.



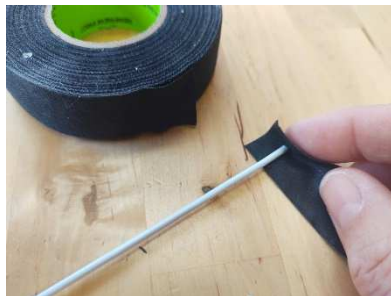
3. Straighten one side of your coat hanger wire. Pliers can help make it straight in difficult areas.



4. File the sharp straightened end of your wire on a flat file. Lay the file over a container on your table and rub your wire end on it to catch the sharp shavings for recycling.



5. Wrap any cut ends of your wire in hockey tape, twisting the tape so it goes over the wire end several times to avoid cutting your fingers on remaining sharp ends or having it poke through fabric later.



6. Trim your straight coat hanger wire to approximately 22 1/2" long. Long stem roses are usually about 23" long.

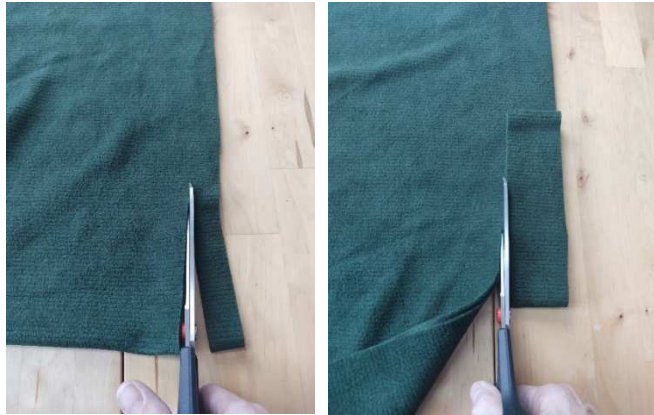


- a. Add two pieces of tape to your work bench for easy measuring if you are making a bunch of flowers.



7. File and wrap the other end with hockey tape. Add leftover wire to your scrap metal box or recycle.
8. We recommend wearing heat protective gloves while working with hot glue. Remember:
  - a. Applying glue to metal like wire can heat the wire further along and burn your hands if it is too hot.
  - b. Hot glue dries slower through layers of fabric and might not cool as fast as you expect.
  - c. Hot glue can squeeze out through the weave of fabric when it is still fluid, so avoid pressing fabric layers in place without protective gloves. A popsicle stick is a good alternative for pressing.

9. Cut 1" wide strips of long green fabric using sewing shears (below left). It does not have to be exact or very straight. You can use the previously cut part as a guide by following it up as you cut (below right).



- a. Choosing a fabric with stretch will make the wrapping process easier and the results smoother.
  - b. Cutting is faster if you fold your fabric in half first so you are cutting 2 layers at once.
10. Fold one end of your green fabric strip over one end of your wire on an angle, gluing it in place with hot glue. Use a popsicle stick to press the fabric in place with hot glue.



11. Wrap your green fabric strip around your wire, working diagonally up the length overlapping slightly with each wrap. Apply hot glue every few inches to hold it in place.



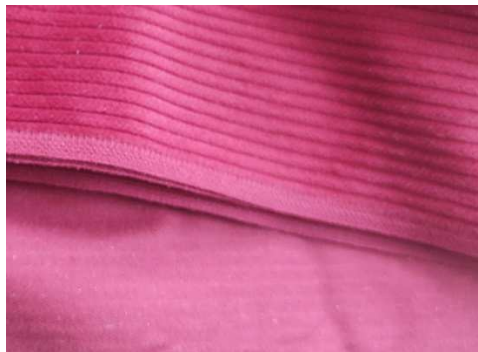


12. Cover the entire wire, overlapping the other end and trimming off excess fabric.



13. Choosing a rose fabric:

- a. A fabric that is slightly different on the front and back can make your rose look even more realistic. Light falling on a natural rose makes it look more than one shade of red.



- b. A fairly thick fabric with a bit of stretch will make wrapping easier and the rose more realistic because the edges will curl.



14. For the centre of your rose:

- a. Cut a 3" wide strip of red fabric for your rose about 5" long.



- b. Fold the fabric strip in half lengthwise with the right side of the fabric out. Glue the inside of the fabric together.
- c. Glue the end of the folded fabric to one end of your rose stem. Wrap the rest of the strip around the tip of your stem gluing as you go.

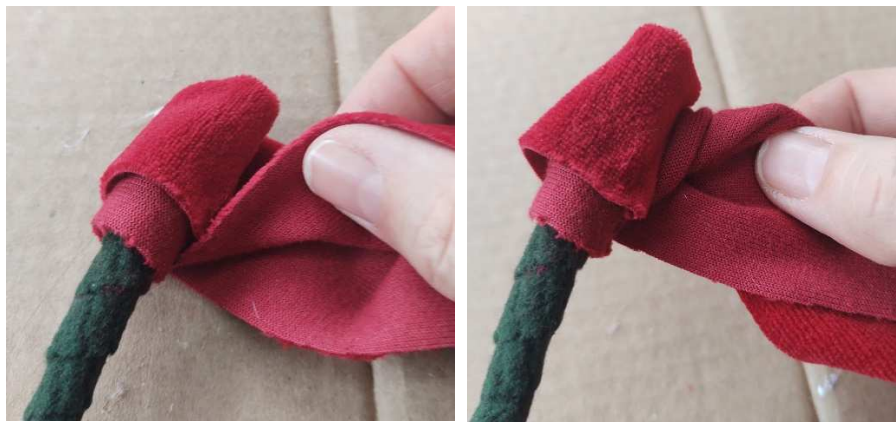


#### 15. Method 1: Continuous Fabric Strip for the Rose Body

- a. Cut another strip of 3" wide fabric as long as the fabric will allow.
- b. We recommend wearing heat protective gloves.
- c. Fold your fabric in half lengthwise at one end, gluing the layers together just at the end.



- d. Glue the fold side upward to the top end of your wire.
- e. Twist your red fabric strip the other way up, wrap a bit more and glue in place. Allow some of the back of the fabric to show for colour variation like a real rose.



- f. Continue wrapping, occasionally twisting your red fabric and gluing it to form your rose. Always stay at the top of your wire stem for this.



- g. Remember hot glue takes longer to dry under several fabric layers and can squeeze between and through the fabric.



- h. When the rose is the width that you are aiming for, cut off the remaining fabric strip. Glue the end and press in place with a popsicle stick to finish.



- i. Your rose will look something like this when finished, using this method.



16. Method 2: Individual Petals for the Rose Body

- a. Cut red fabric strips in three different widths, approximately  $1\frac{1}{2}$ " , 2" and  $2\frac{1}{5}$ " .



- b. Fold each fabric strip into a concertina about  $\frac{1}{2}$ " shorter than it is wide.





- c. Cut out petals in a shape roughly circular but with a point on the bottom and flattened on top. The shape does not have to be perfect and variations look more realistic.



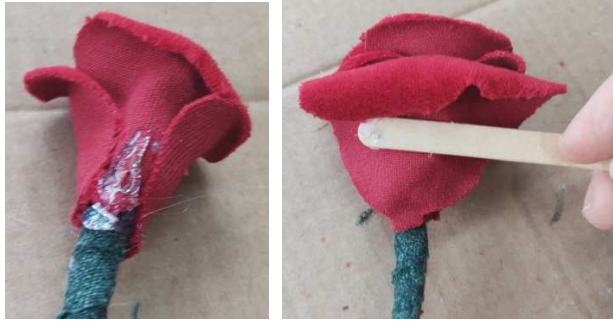
- d. When finished you will have a selection of petals in different sizes.



- e. Apply hot glue to one side of rose centre on the end of the stem. Press the curved end of one of your fabric petals in place wearing heat protective gloves. Start with the smallest size petal. A popsicle stick can also be used to press it in place.



- f. Rotate your rose about  $\frac{1}{3}$  of the way around and repeat, adding a petal that partially overlaps the previous one.



- g. Continue adding petals this way, moving about  $\frac{1}{8}$ " down after every 3-4 petals.



- h. Start with the smaller petals and gradually use progressively larger ones. Add a few smaller ones last.  
i. Your rose will look something like this when finished, using this method.



17. Cut a  $2\frac{1}{2}$ " wide strip of green fabric and fold it in a concertina  $3\frac{1}{2}$ " long.



18. Cut a leaf shape out of your accordion fold fabric. This is basically an oval except with a point on one end.



19. Cut a small notch on either edge of the pointy end of your leaves.



20. Apply hot glue to your rose stem about halfway down your stem (below left and centre), and press the curved end of one of your fabric leaves in place wearing heat protective gloves (centre) or using a popsicle stick. Add another leaf just below the first one (below right).



21. Add another leaf just below the first one. Add a few more leaves 4-5" above and below this set on your stem.



22. Add 2-3 fabric leaves immediately below your rose flower. This also helps hide any glue showing.



23. Ruffle the centre of your flower out and remove any glue threads. Masking tape can help.



24. Optional: Add coloured hot glue with sparkle to embellish your rose. Red or matching your fabric colour glue for the rose (left and centre) and green for the stem (right).



- a. The hot glue will look lighter when it is dry. Test on a piece of cardboard to see if you like the look first.





25. Optional: add clear beads to look like tiny sparkling drips of water. Stitch a few small clear beads here and there onto your red fabric flower edges.



- a. Or try adding a few tiny dots of silver coloured hot glue if you prefer not to sew.
26. Optional: Wrap your rose in stiff green and gold sparkly fabric with wired edges and tie with a ribbon.
- a. Cut the fabric to size (left), scrunch it together in the centre of your stem, tie with a ribbon (centre) and add a rose sticker (right).



27. Roses can be wrapped individually or place a dozen in a long white box.



28. Happy creating, and please send us photos of your creations if you feel comfortable sharing.

**Useful Information/Adaptions/Variations:**

- Long stem roses are usually about 23" long.
- If you prefer sewing to gluing, hand sew each step with a few tack stitches instead of using hot glue.
- Try embellishing your flowers with washes and dabs of acrylic paint.
- Try clamping your flower stem to the table while you wrap your fabric to make it easier. There are also clamps available that essentially add another hand, to hold the rose while the participant works on it.
- Participants can also work in pairs combining skills, with one person cutting and another person gluing.

**Trouble Shooting:**

- If your petals are still attached to each other after cutting them out, try cutting the layers in your fabric concertina apart before cutting out your petal shape.



- Hot glue does not stick that well to metal wire and can pop off later. Fold your fabric around the wire and glue it to itself. Wrap another layer over top and glue to secure if needed.
- If you have glue showing, try covering it with another piece of fabric.
- Try using coloured hot glue sticks like red and green for interest and if your glue tends to show more than you like.



- Hot glue can transfer heat to metal, so gloves are recommended particularly when gluing near wire.