

WORKSHOP: "FLOWER ACCESSORIES"



Summary: Participants learn to create accessories using artificial flowers, found objects and beads/buttons. Flowers are attached to different types of clips that can go in hair, on a shirt or on a household object like a basket or plant pot. Participants can take the project in their own direction using materials and support clips of their choice.

Materials and Equipment:

artificial flowers assorted types/sizes
artificial leaves and greenery
artificial leaves oval shape ~5"x3"
fabric scraps from upholstery and clothing
denim fabric
braid
buttons
beads
ribbons
wire, about 20-gauge
paper scissors
pencil, eraser, sharpener
scrap paper for sketching
cardboard to work on
instructions/ideas sheet

alligator hair clip blanks 10cm x 0.9cm
hair clip flat and wide, 2 sizes
small hair pins with flat surface
French barrettes
glue gun
glue sticks for glue gun
cardboard for under glue gun
heat protective gloves
wood skewers
fabric scissors
pliers/wire cutters
safety glasses
coarse sandpaper
2 popsicle sticks
artwork samples

Class Plan:

1. Choose a clip, barrette or side slide to work on.
 - a. French barrettes work well in hair, clipping firmly in place.



- b. Side slide alligator type clips work in hair, on baskets, lapels and anywhere you can clip onto. They have a longer and wider surface to work on, ideal for larger flowers.



- c. Fashion clips work in hair and clip onto thinner things. They are already decorative on the surface so it doesn't matter if some of the clip still shows. They provide a sturdy but smaller work surface.



- d. Utility clips clip onto almost anything and provide a sturdy attachment with a solid but smaller working surface.



2. Roughen the surface of the clip with sandpaper if you are working with a smooth plastic top surface. This will give the glue something to grip onto.



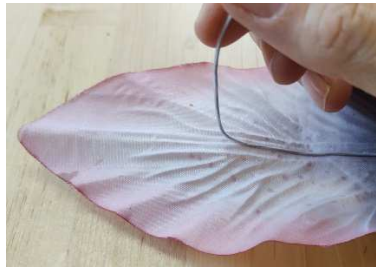
3. Select a large artificial fabric leaf to work with.



- a. Cut it off of the stem with wire cutters.



- b. Remove the centre wire if there is one, and save the wire for use elsewhere.



- c. Trim the ends of the leaf to fit on the clip you have chosen.



4. You can either glue your background leaf onto your barrette right away, or glue it on after you've attached your flowers.
 - a. It is easier to attach flowers to your background leaf if you attach it to the clip at the end, because the leaf lies flat on your work table while you work.
 - b. However, if you glue it on at the end, it can be a bit more difficult getting the flower arrangement to fit the curve of your clip, if it has a curve.
5. If your clip is long and narrow or you can't find just the right base leaf, choose several leaves and overlap them to cover the top of your clip.



6. Add extra leaves behind your background leaf to make it sturdier if you are making a larger arrangement.



7. When hot gluing and pressing your leaves and flowers together:
 - a. Use a popsicle stick instead of your fingers.



- b. And/or wear leather heat protective gloves.



8. Apply the hot glue to your leaf wherever possible, instead of your barrette when working with a metal barrette. The hot glue heats the metal and can burn your fingers.



9. Choose your main artificial flowers to set the tone and style of your flower arrangement clip. We've chosen large orange roses to work with.



- a. Second hand stores and yard sales are great sources of artificial flowers. This is good for repurposing and getting a good price. If necessary, they can also be purchased at dollar stores. Or better yet, make your own flowers.
10. Cut the main bloom off for use in your arrangement. Cut right underneath the bloom with wire cutters, so it will sit flat on your arrangement. Alternatively, leave a bit of the stem if it is flexible for shaping.



11. Plan your flower arrangement before starting to glue. Smaller elements like tiny flower sprays under bigger ones are best attached first.



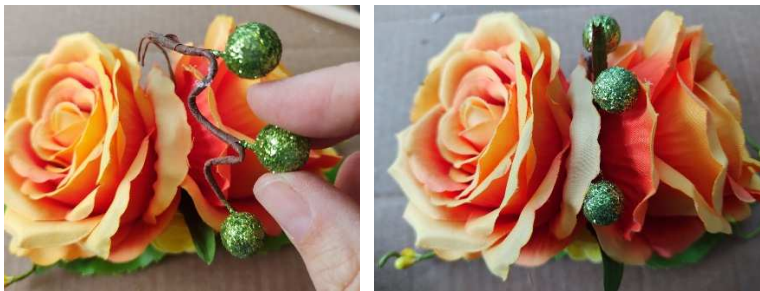
12. Use hot glue to attach your larger flowers to your background leaf. Check that they are securely attached when the glue is dry. If not, lift the edges and add more glue underneath.



13. Add medium size and smaller flowers in between the larger flowers. Apply the hot glue to the spot and press the smaller flowers in place using pliers or wearing gloves. Here we added yellow foam flowers.



14. Make a zigzag with the wire of a spray of glitter balls and add it to the centre of the arrangement. Apply hot glue to the wire stem and fit it carefully between the larger flowers, without getting glue on them.



15. Add a tiny splash of contrasting colour with more tiny flowers. These can also be used to hide any glue that landed in the wrong place. Apply glue to the back of the flower, holding it with a pair of needle nose pliers and pressing it into place.



16. Check all views of your arrangement and make any additions you'd like.



17. To make decorations like spirals with wired plants:
- Wrap the end of the wired plant around one side of a pair of round nosed pliers or a pencil.



- Remove the pliers or pencil leaving the spiral. Glue the wire stem and insert the spiral into your flower arrangement.



18. Try making a smaller clip for a purse or shirt.
- Add the base elements first, hot gluing them in place.



- Cut off one larger flower and add it to your arrangement.



19. Try a longer narrower arrangement to fit on a French barrette.



20. Happy creating, and please send us photos of your creations if you feel comfortable sharing.

Useful Information/Adaptions/Variations:

- Try working on a Velcro patch instead, to attach your creation in different places on a garment or even on a wall with peel and stick Velcro.
- Try making your own artificial flowers from beads, fabric scraps, salvaged clothing and found objects.

Trouble Shooting:

- Hot glue does not stick that well to metal and can pop off later. If you glue straight onto the metal and it comes off later, try securely wrapping the metal with a piece of fabric first and then glue onto that. Glue the fabric ends to the fabric to hold it in place.
- If you leave too much stem on the back of your main flowers it can make it difficult to get the flower to sit flat in your arrangement. Try cutting the stem shorter if the stem wire isn't very flexible.



- Hot glue can also transfer heat to metal, so gloves are recommended if you are touching the glued metal right away.