

## WORKSHOP: "PAVERPOL FIGURE SCULPTURES"



**Summary:** We will make a wire form with a figure proportions chart for a guide, add a foil layer, position the figure and cover it with repurposed t-shirt fabric dipped in fabric hardener. Once dry this can be painted and embellished with yarn for hair and props like a book.

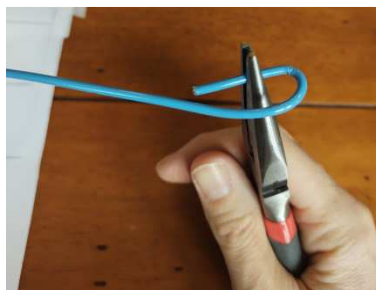
### Materials and Equipment:

2 pieces blue coated copper wire 27" long  
1 piece pink coated copper wire 24" long  
foil  
old t-shirts  
paverpol fabric hardener  
block of wood or driftwood  
sand  
yarn (for hair)  
smooth cloth wrapper for a face  
safety glasses (for working with wires)  
instruction/ideas sheet  
acrylic paints, assorted colours  
plastic lids for paint palettes  
chloroplast card for wrapping yarn  
scrubby

figure proportion chart  
pliers/cutters  
plastic containers for fabric hardener work  
small plastic container for mixing paint and sand  
large plastic container to sit your figure on  
wood skewer (poking things into place)  
paint brushes – assorted sizes  
ruler or small tape measure  
scissors  
6 pair vinyl or nitrile gloves  
small piece of sheet plastic  
small piece of uncoated wire  
map pin for a nose  
masking tape or hockey tape

### Class Plan:

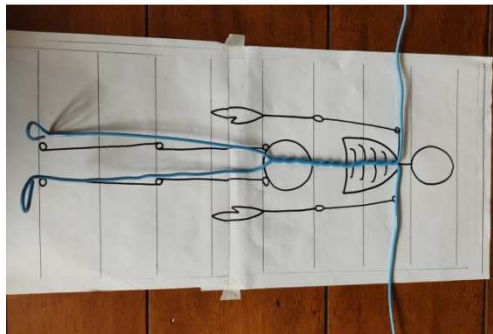
1. Two figure proportions charts are provided as a guide for making your figure, but everyone is different so feel free to make your figure however you like. The materials provided are enough to complete the larger figure, but you can make the smaller one if you prefer.
2. Take your two blue (longer) coated wires and bend a foot into each wire by twisting the wire back on itself with your pliers.



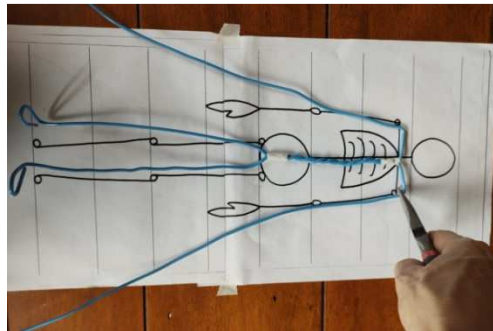
3. Flatten each foot with by bending your loop upward.



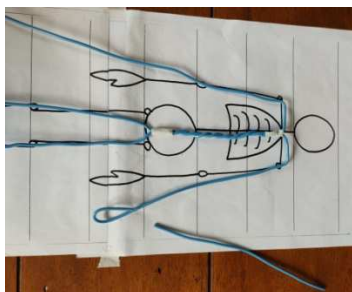
4. Match up the two feet you just created and compare it to your proportions chart. Twist the two wires together from the bum up to the shoulders on your figure to form your figure's spine. Tape each end of your twist.



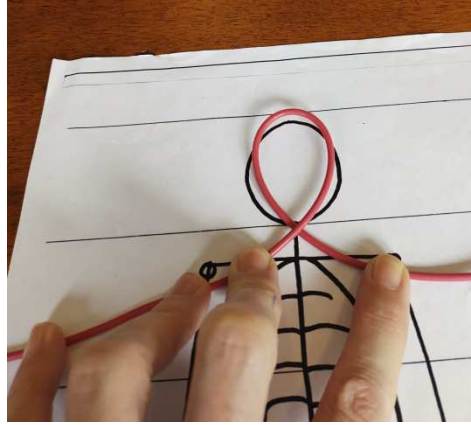
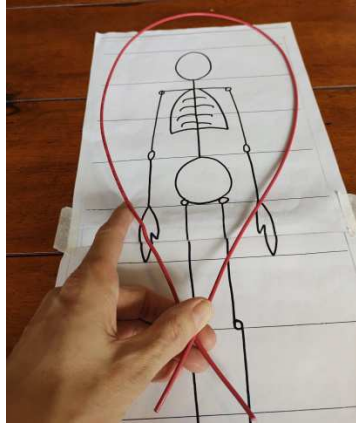
5. Fold the two remaining ends of your wires out straight to create the shoulders.
6. Comparing your figure to the chart again, bend the wires down at the outside edges of your shoulders to form the arms.



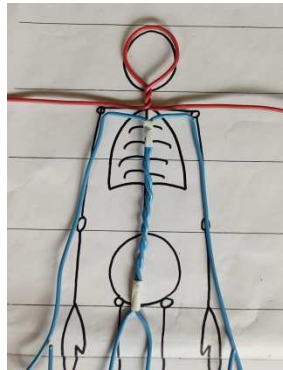
7. Compare your arms to the chart and twist a loop to make hands with your pliers. Trim off any extra wire.



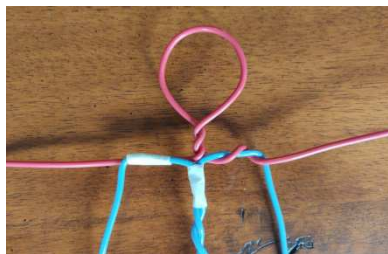
8. Take the pink (shorter) wire, cross the ends and keep pulling them to form a head sized loop at the middle of the wire.



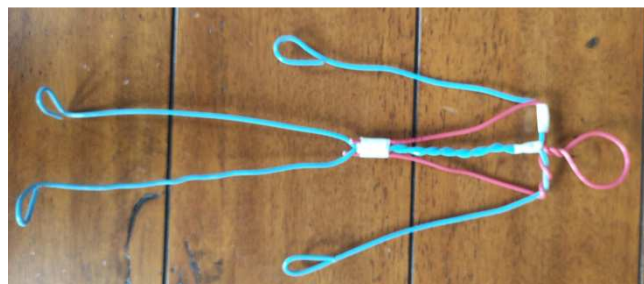
9. Put 2-3 small twists at the base of your wire loop to form your neck. You can compare it to your proportions chart for length if you like. Then line it up above the shoulders of your blue wire figure.



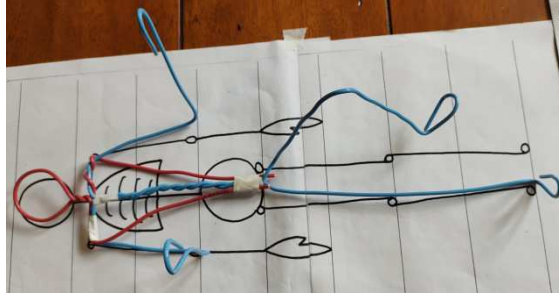
10. Twist the pink wire around the blue at the shoulder or tape them together to form the shoulders.



11. Bend the remaining ends of the pink wire down to your figure's waist, trim the extra wire and tape the ends to the spine.



12. Compare your wire figure to your proportions chart and bend the wire at base of the spine (hips), knees and elbows.



13. Tear off lengths of foil about 10" wide (approximate is fine), fold them in half widthwise over and over to make long thin strips of foil about ½" wide (middle foil piece in the image below).



14. Wrap these folded foil strips around your wire figure, working from hands and feet towards the body. Squeeze the foil as firmly as you can as you go to make your figure solid. If you have a small hammer available, use it to gently tap the foil to make it solid and to shape it. Tape the foil end in place and start a new strip taping as needed.



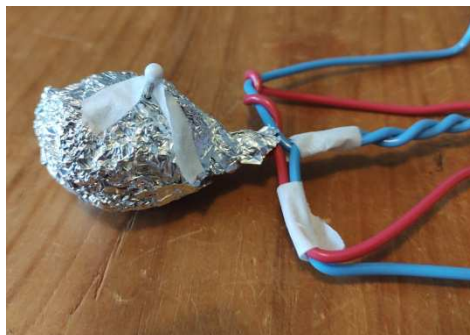
15. Fold wider strips to wrap around the body. Wad up layers of foil to pad the body as much or as little as you like. Always squeeze as firm as possible as you go.



16. Tear off a large piece of foil and wad it into the shape of an oval ball. Squeeze it as firmly as you can, adding more layers as needed to make a ball that fits in the wire loop of the figure's head. Tap it with a hammer if you have one to make this as solid as possible. Tear off more of the smaller pieces of foil and over wrap the ball and wire loop all in one to hold them together. Tape as needed to hold layers in place.



17. Push your map pin part way into your sculpture's face for a nose and wrap with tiny pieces of tape to hold it in place. Over wrap again with pieces of foil to cover the nose and whole head. Squeeze firmly.





18. If you would like to add more shape to your figure you can add 2 solid tear drop shaped foil balls to make a bum and another two for a chest.
19. Optional: You can add props at this stage, for example a book or a ball:
  - a. For a book, cut a small piece of flexible plastic to size, fold it in the middle, wrap foil over it and tape it in position in your sculpture's hands using masking tape or hockey tape.



20. Cut strips of t-shirt fabric (avoiding the rolled hem and prints) about 6" long and ½" wide. Cut lots from the dark coloured t-shirts provided. Dark shirts work well with the coloured hardeners like gray and bronze.
21. Setup your workspace for working with fabric hardener:
  - a. Wear the vinyl/nitrile gloves if you don't want to get it on your hands (it sticks well to nail polish). If you get it on your hands it acts like school glue, drying and peeling off.
  - b. Have a bucket of warm soapy water available and scrubby for washing your hands and tools. Do not wash your hands in the sink and let the hardener go down the drain! **The fabric hardener will block the drain.** When finished pour your bucket of wash water outside.
  - c. Cover your work space area.



- d. Wear a smock to protect your clothes or wear clothes you don't care about. The fabric hardener won't wash out of your clothes once dry and it dries fast.
- e. The hardener is considered non-toxic but we recommend using it in a ventilated area (e.g. open a window).
- f. Sit your sculpture on the large plastic tub provided for working to avoid making your wood lumpy with dried fabric hardener.

22. Cover your sculpture figure in strips of t-shirt dipped in fabric hardener.
- Cover the figure the same way as you did with the foil working from the hands and feet inwards. The hardener has a sticky stage as it dries, so you may want to pause for drying between sections.
  - Drip one fabric strip in the hardener at a time and completely soak it in the hardener. Gently smooth off extra hardener as you take it out, so it is not dripping and does not have hardener pooling on the surface. Don't pull the t-shirt strips hard because it will stretch into a string.



23. Optional: Cover your sculpture figure's face with a smooth wrapper, the small white squares of fabric provided:
- Cut a piece of one, dip it in hardener and spread it over the face towards the back. Fold the extra flat at the back.
24. Optional: Add hair to your sculpture:
- Make a pompom by wrapping yarn around a card and tying the yarns together tightly in one place (yarn only not the card). Cut the yarn on the opposite side from where it is tied.
  - Dip your cut pompom wig in fabric hardener, smooth off the excess, put it on top of your sculpture's head and arrange the hair.
25. Optional: Add clothing to your sculpture:
- Cut triangles of t-shirt fabric, dip them in hardener, fold over part of one triangle point, position this edge at the waist of your sculpture and arrange the skirt folds.
  - Add 3-4 triangles this way to create a skirt working around the sculpture's waist.
  - Cut 2 small squares of fabric to make at top. Dip one in hardener and apply it to the back first. Apply the second one to the front overlapping the edges of the back piece.
26. Optional: Prepare the seat for your sculpture figure:
- Coat your block of wood with fabric hardener on all sides.
  - You can also mix a bit of sand in with the hardener you use for this step to add a texture to the surface, if you like.



27. Use paverpol to glue your figure onto your block of wood. If you are using a coloured hardener and your wood is natural, be careful not to get drips on your wood.
28. Optional: Varnish your sculpture once the fabric hardener has dried for two weeks.

#### **Useful Information/Adaptions/Variations:**

- Your sculpture can stay outside all year round if you have coated all surfaces with the fabric hardener and there are no gaps where water could pool inside the figure.
- A coat of varnish is recommended to protect against sun fading and if your sculpture will be placed outside. Use a varnish with UV protection if available.
- When you pour your wash up water outside, it is best to pour it through a strainer to catch the bits.
- Gloves can be recycled in a TerraCycle protective gear box, or returned to the instructor in a sealed sandwich bag for recycling.
- You can paint on your fabric hardener with acrylic paints. This can also be done with a dry fuzzy brush and just touching the tips of the surface to enhance the surface texture.

#### **Trouble Shooting:**

- If you end up with an area of your sculpture that dried with the fabric lumpy, you can add another layer to cover this and smooth it out.
- If you end up with drip lines of fabric hardener on your sculpture, the easiest solution is to add another strip of cloth to cover it. For example, give your sculpture a scarf if there is a drip line down the figure's back.